

OWS Oil/Water Separator Kit Assembly Guide

Patent Pending

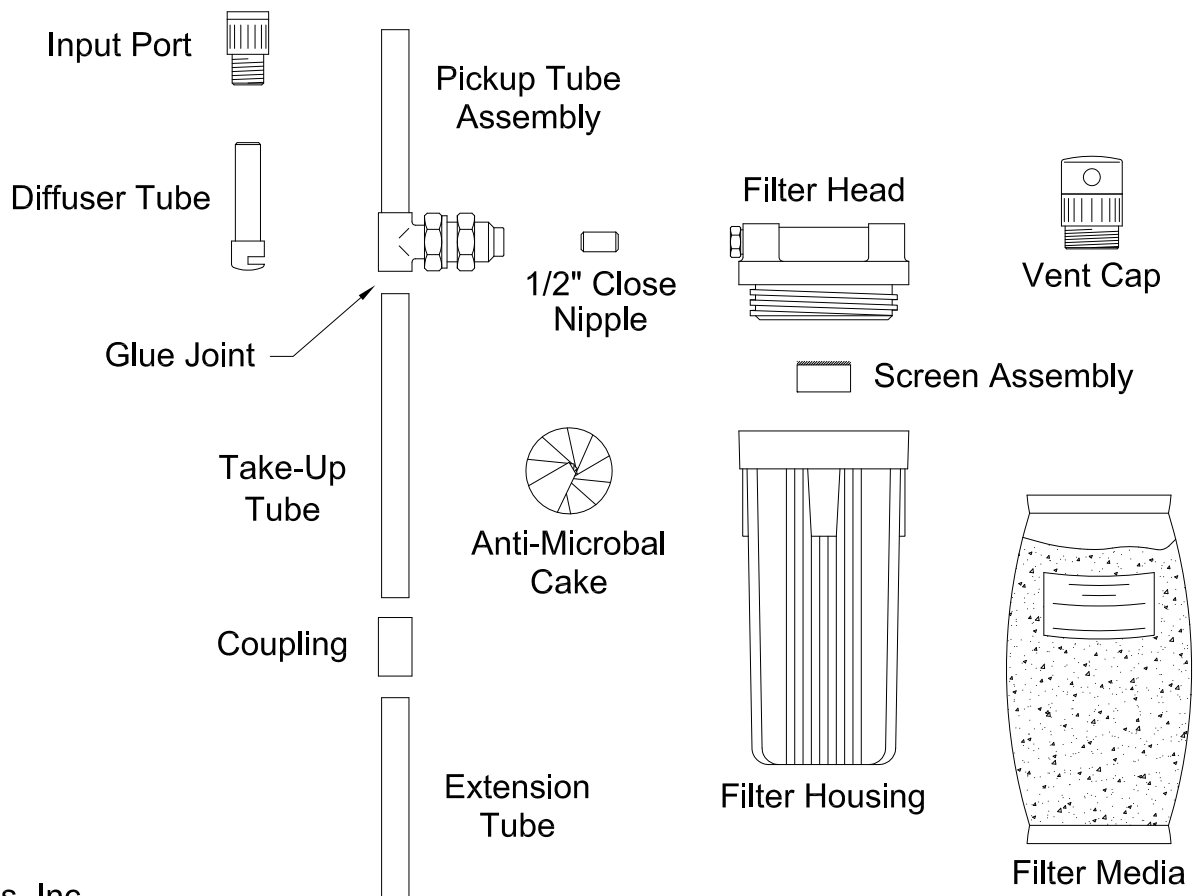
Assembly

1. Unpack the Oil/Water separator kit and inspect for damage.
2. Any damage should be reported to the shipper immediately.
3. Familiarize yourself with the various components shown in the illustration below.
4. Acquire all the tools and materials listed below.

A. Slip Joint Pliers	E. Scissors
B. PVC Pipe Cutter	F. PVC Cement
C. Hand Drill Motor	G. Teflon Tape
D. 1-3/8" Hole Saw	H. Dealer Sticker (Not Supplied)
5. Using the chart below, select a suitable drum for installation. The drum should be made of plastic and have a clamp-on head, with both 2" and 3/4" bung holes.

Compressor Horsepower	5 through 50 HP	30 Gallon (OWS-4)	Recommended Drum Size
	50 through 100 HP	55 Gallon (OWS-9)	
	Greater then 100 HP	75 Gallon	

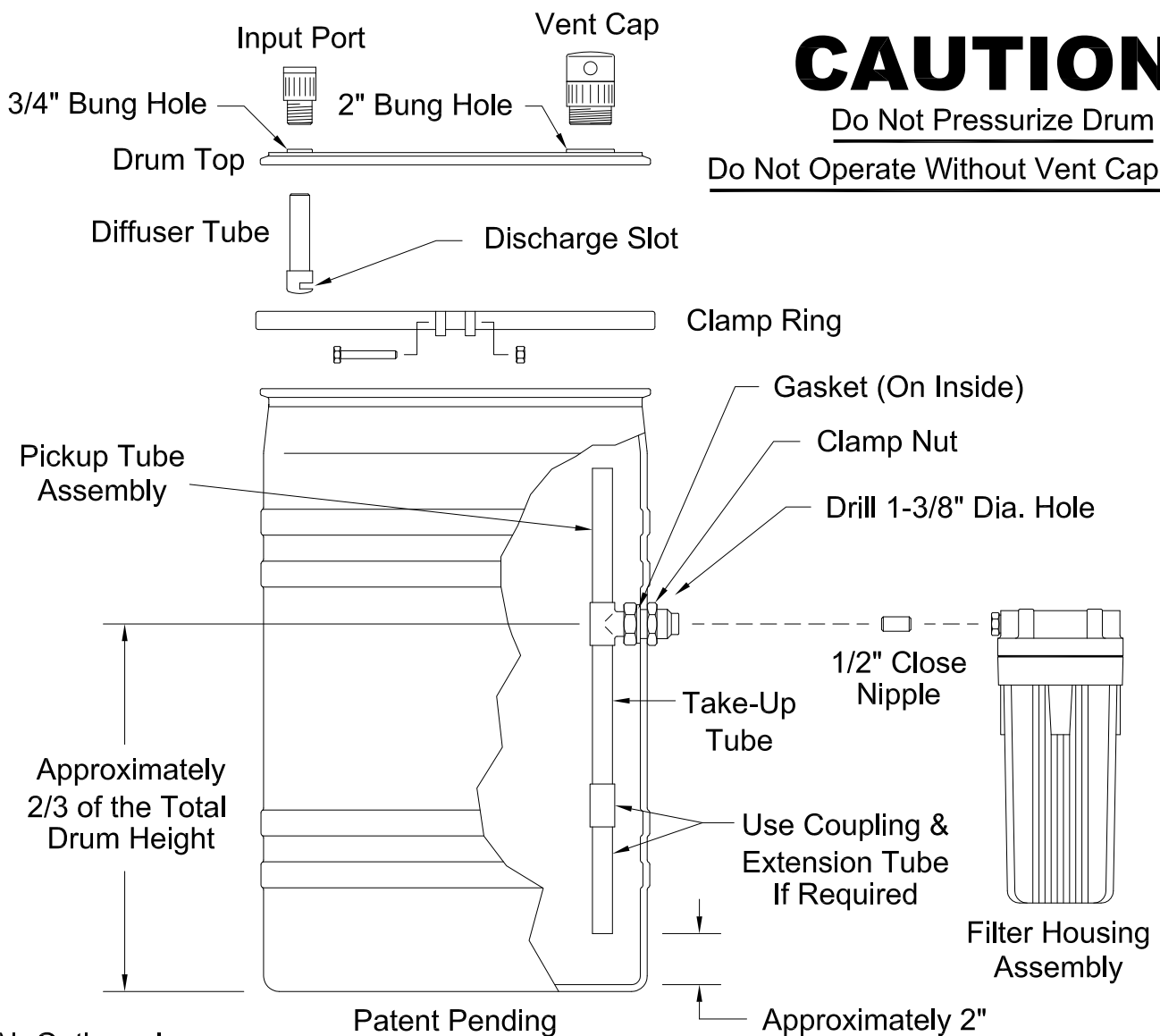
6. With the PVC cement, glue the take-up tube into the pick-up tube assembly.



Air Options, Inc.
 P.O. Box 35984
 Houston, Texas 77235-5984
 E.Mail: Info@Air-Options.com

Assembly (cont.)

6. Remove the top from the selected drum.
7. Screw the vent cap into the 2" bung hole.
8. Screw the input port into the 3/4" bung hole.
9. With the PVC cement, glue the diffuser tube into the bottom of the input port.
Note: The discharge slot should be aligned to the center of the drum.
10. With the hole saw and drill motor, drill a 1-3/8" hole in the side of the drum approximately 2/3 of the drum height from the bottom as shown in the illustration below.
11. Temporally insert the pickup tube assembly into the sawed hole from the outside and cut or extend the lower tube so that there is approximately 2" of clearance at the bottom of the drum as shown the illustration below.
12. Install the pickup tube assembly using the gasket and clamp nut as shown. Tighten the nut with the slip-joint pliers. (DO NOT USE SEALANT ON THIS JOINT!)
13. Screw the filter housing assembly into the discharge tube port via the 1/2" close nipple.
14. Kit assembly is complete, refer to installation and operation guide.



CAUTION

Do Not Pressurize Drum

Do Not Operate Without Vent Cap In Place